



USAID
FROM THE AMERICAN PEOPLE



FEED THE FUTURE
The U.S. Government's Global Hunger & Food Security Initiative

TAPP
TANZANIA
AGRICULTURE
PRODUCTIVITY PROGRAM
Mapato zaidi kupitia kilimo bora

TANZANIA AGRICULTURE PRODUCTIVITY PROGRAM (TAPP) OVERVIEW

Stephen Mruma,
5th March 2013
Morogoro

Implemented by Fintrac Inc.

OVERVIEW

Official Name:	Tanzania Agricultural Productivity Program “TAPP”
Duration:	27th October, 2009 to 31st October, 2014
Prime Contractor:	Fintrac Inc.
Partners:	TAHA, Arusha Blooms, Africado, Multiflower, NEI, Golden Food Products, Mcharo, Natureripe, Nsombo, Buturi, Amagro, HACOCA, Zapha+, among others
Direct Employment:	Current 54 (58 Total) + > 20 from partners
USAID Designation:	Is part of Feed the Future, a US Presidential initiative, Economic Growth and PEPFAR funding

Main Goals

- The overall goal of USAID-TAPP is to raise rural incomes, improve nutrition, and expand markets.
- The program will benefit 20,585 rural families.

MAIN ACTIVITIES

- Transfer good agricultural practices to smallholder farmers
- Reduce logistics costs
- Partner with small, medium and large companies to increase opportunities for smallholder farmers to obtain updated inputs, new technologies and markets.
- Promote good practices to improve health and nutrition in assisted households.
- Train rural enterprises in business management
- Increase availability of inputs and financial products
- Create new buyer linkages
- Expand access to local, regional, and export markets

MAIN TARGETS – 5 YEARS

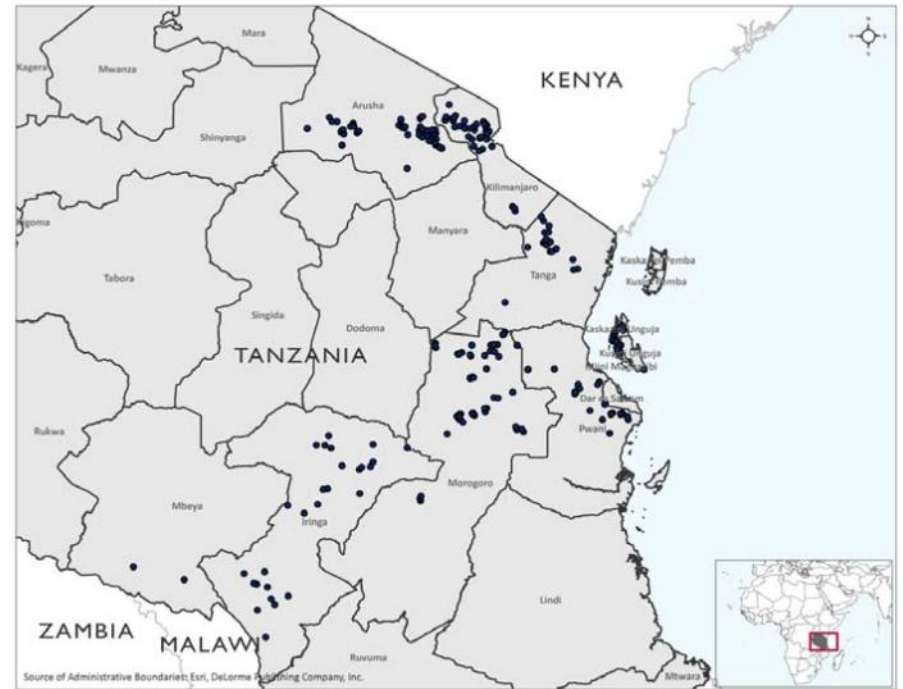
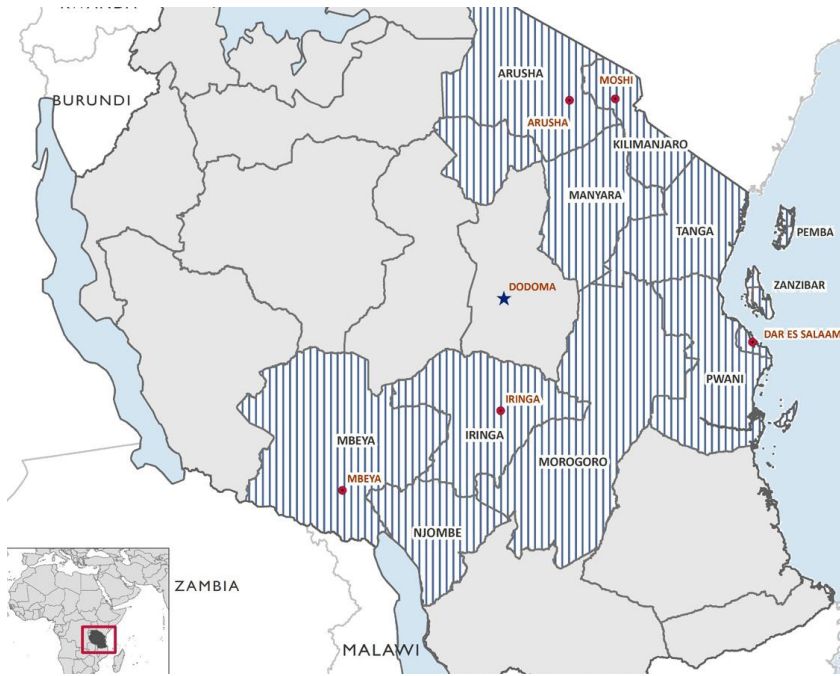
- Over US\$12 million in incremental sales from TAPP assisted farmers.
- 20,585 smallholder farmers
- Gross margins per hectare must exceed US\$ 1,571 per hectare per cropping cycle.
- Yields must increase by an average of 45 percent from the farmers' baseline.
- 10,697 hectares under improved production practices.
- Over US\$ 7.5 million in investment from TAPP beneficiaries.
- Over 4,988 home or community gardens with improved diet diversity established.

To achieve TAPP's goals, project clients need to update their production practices, increase their awareness on health and nutrition issues, and professionalize their operations to take advantage of market opportunities and expand existing markets.

PHILOSOPHY

- Agriculture is a business – treat it as such
- Market led production
- Integrated interventions (all technical areas) maximize results and improve sustainability
- Smallholder farmers need programmed, reliable technical assistance and training in order to experience the full benefit of the technological package to enhance adoption
- Leveraging resources & markets through partnerships expands the outreach and results
- Interventions must result in increased incomes AND improved health and nutrition

Geographical Coverage



TECHNICAL AREAS OF INTERVENTION

- Production
- Grants / Partnerships
- Health and Nutrition
- Business Development Services / Access to Finance
- Market Development / Market Links

TECHNOLOGY PACKAGE – RAISED BEDS



Njombe Farmers Group



Mbeya Rural Farmers Group

TECHNOLOGY PACKAGE – SEEDLING PRODUCTION



Mbeya, Kilimanjaro, Zanzibar, Iringa

TECHNOLOGY PACKAGE – PLANT SPACING



Iringa, Morogoro, Pwani, Iringa

TECHNOLOGY PACKAGE - IRRIGATION



Mbeya, Iringa, Morogoro, Arusha

TECHNOLOGY PACKAGE – OTHER ACTIVITIES

- Improved seed varieties/hybrids.
- Nutritional program (does not mean more fertilizer).
- A clean crop (weeding).
- Integrated Pest Management (Preventive vs. Corrective).
- All part of the Good Agricultural Practices package.



BEFORE / AFTER - ONION



BEFORE / AFTER - PINEAPPLE



Traditional – 3,000 suckers per acre , New spacing – 17,000 suckers per acre

BEFORE / AFTER - PEPPER



Select Results

CROP YIELDS/ACRE

	<i>No Technology</i>	<i>With Technology</i>	<i>Farmer Groups</i>	<i>Total Yield</i>
Tomato	2-5 tons	50-60 tons	Police Academy, Moshi	64 tons
			Jitegemee FG, Lushoto	55 Tons
Green House		33 kg/m ²	Idd Seuf, Lushoto	9 tons/300 m ²
Green Pepper	1 - 3 tons	15-20 tons	Ijuma Mkuapa, Morogoro	19 tons
*Pineapple	3,000 units	15,000 units	Potential	
*Bananas	100 - 300 bunches	1350 bunches	Potential	
Onions	18 bags of 140 kgs	90-100 bags of 140 kgs	Rundugai FG, Moshi	98
			Mang'ola FG, Mag'ola	96
			Rundugai FG B, Moshi	94

* Potential according to plant population, not harvested

ASANTENI SANA

A