

Humidtropics

New opportunities for improved
livelihoods in a sustainable
environment



FEED THE FUTURE
COLLABORATIVE RES
INNOVATION LABS



**Scaling Horticulture
& IPM Technologies**

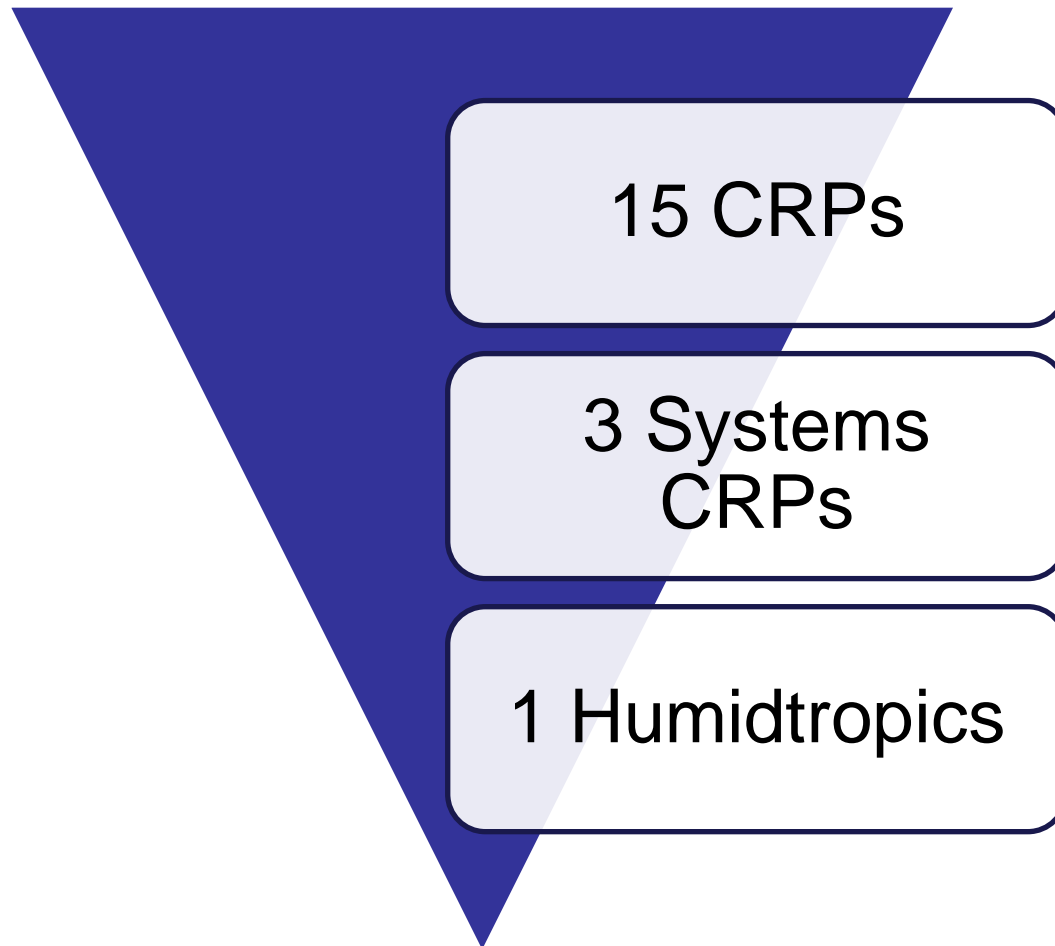


Global Development Challenges

- Hunger and Poverty
- Malnutrition and disease
- Environmental degradation
- Climate change



The CGIAR Research Programs (CRPs)



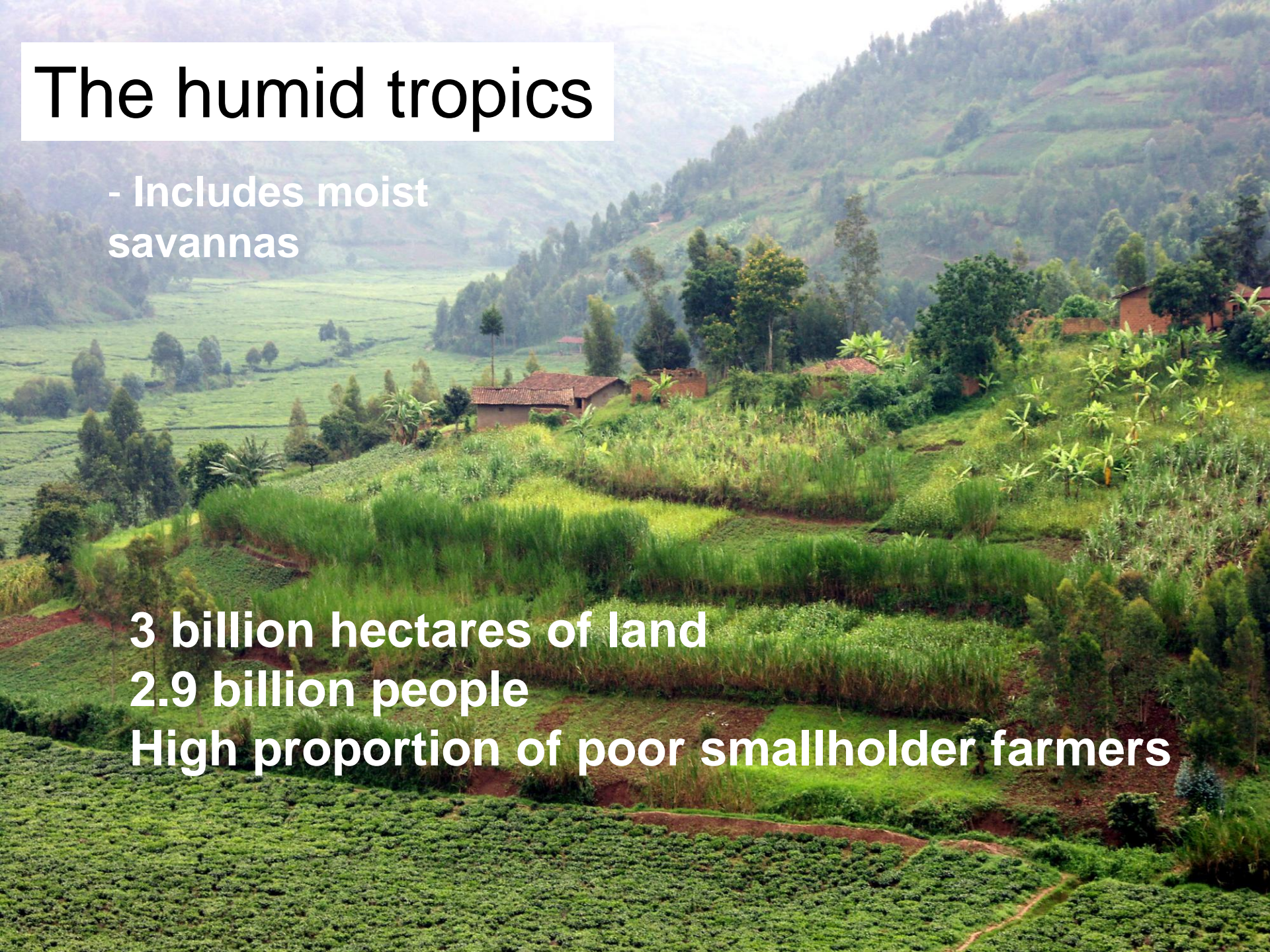
The humid tropics

- Includes moist
savannas

3 billion hectares of land

2.9 billion people

High proportion of poor smallholder farmers




High potential





ecological / human potential
GAP
productivity / livelihood standards



ecological / human potential

↑ ↑ ↑ ↑ ↑

productivity / livelihood standards

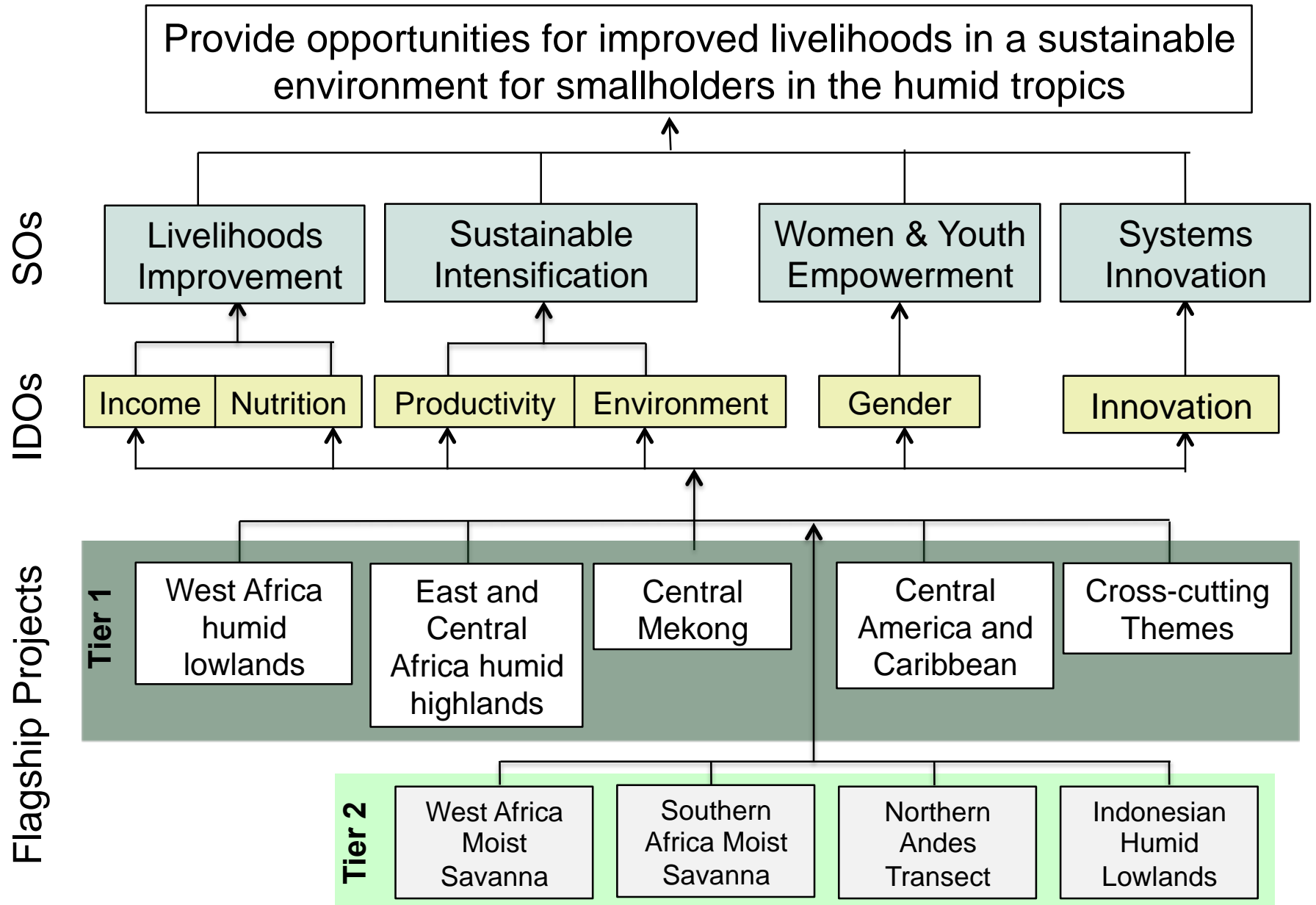
Unlocking the Potential - Humidtropics as Key

Integrated systems approach...

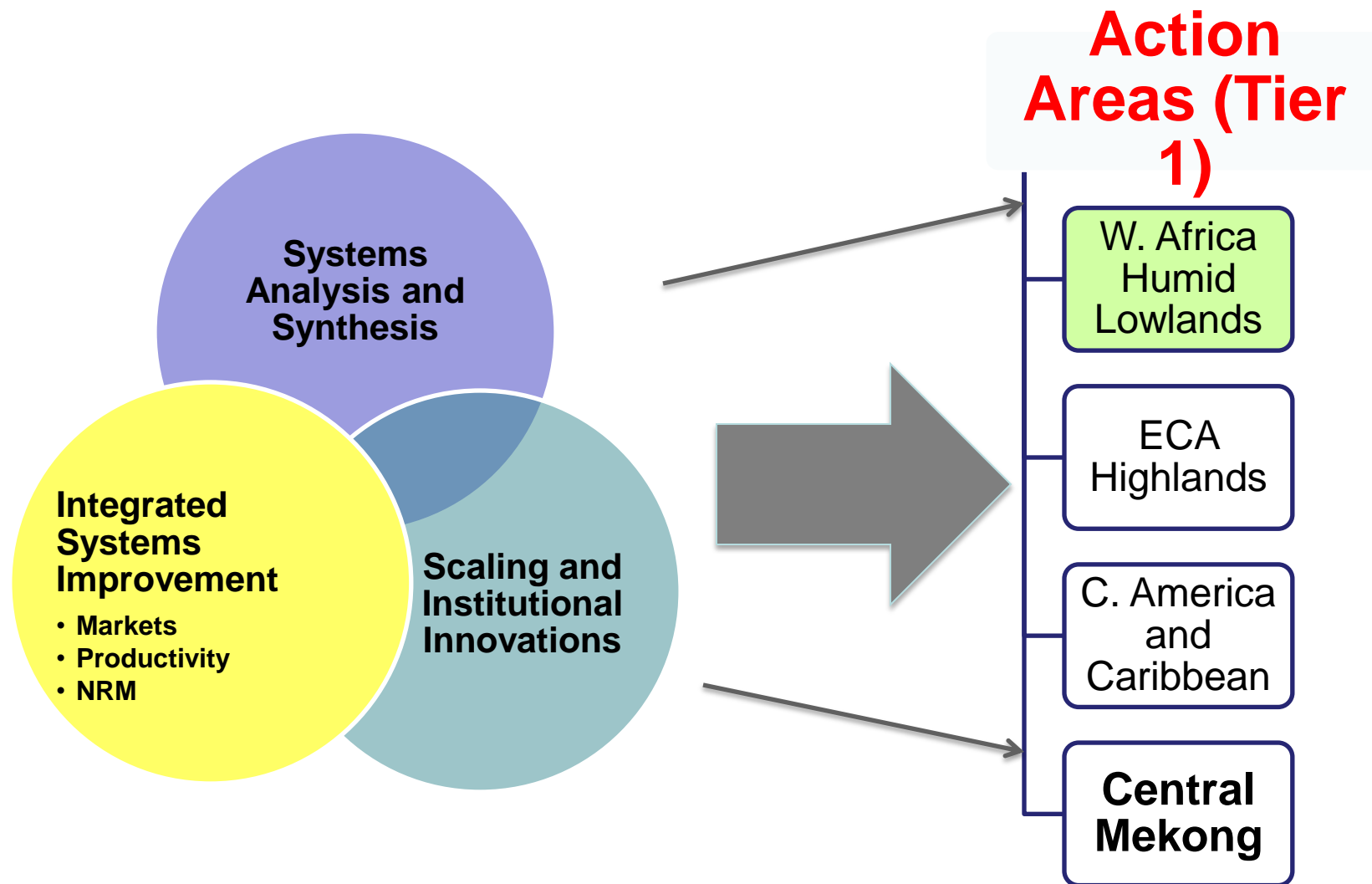
- People
- Partnerships
- Policies / Politics
- Production systems
 - Productivity and stability
 - Including loss and wastage
- Sustainable Intensification...
- Sustainable diversification...
(resilience, stability, productivity)



Programmatic Framework



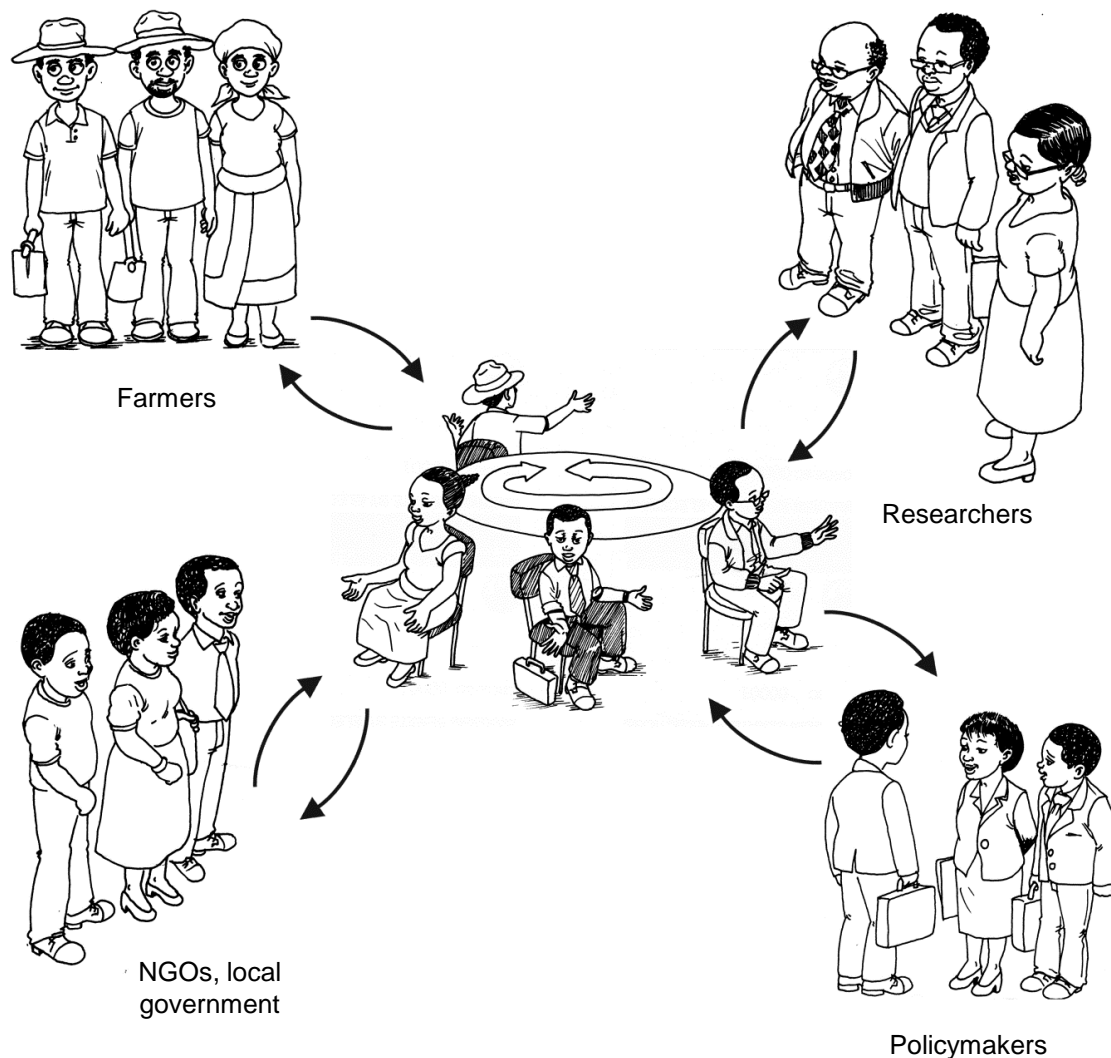
SRTs in Action Areas



Building on and Strengthening Existing Initiatives

- Consortium for Improving Agriculture-based Livelihoods in C. Africa (CIALCA)
- Sub-Saharan Africa Challenge Program (SSA-CP) – Led by FARA
- Africa Rising – A USAID-supported project
- Sustainable Tree Crops Project

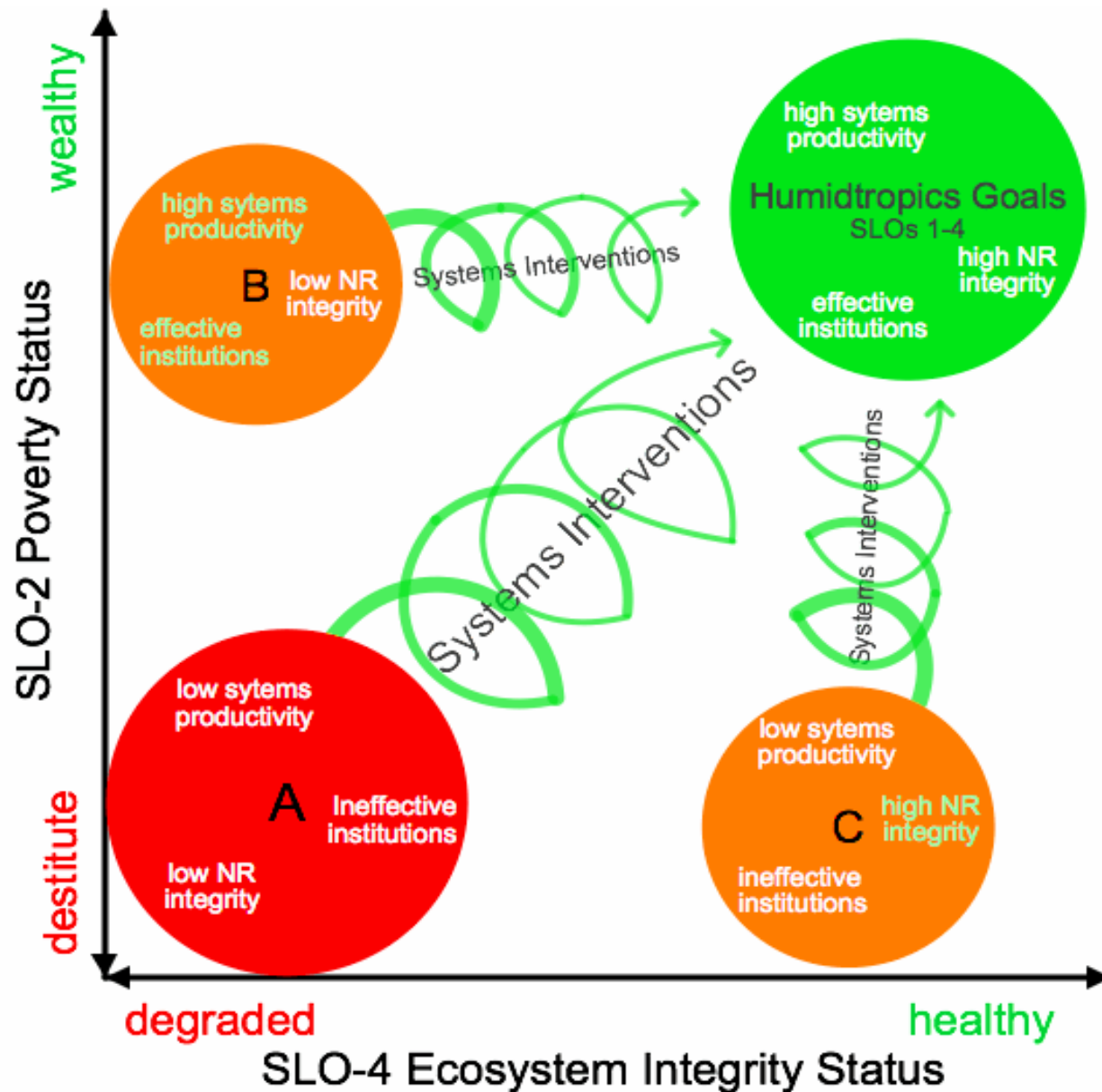
What are R4D platforms?



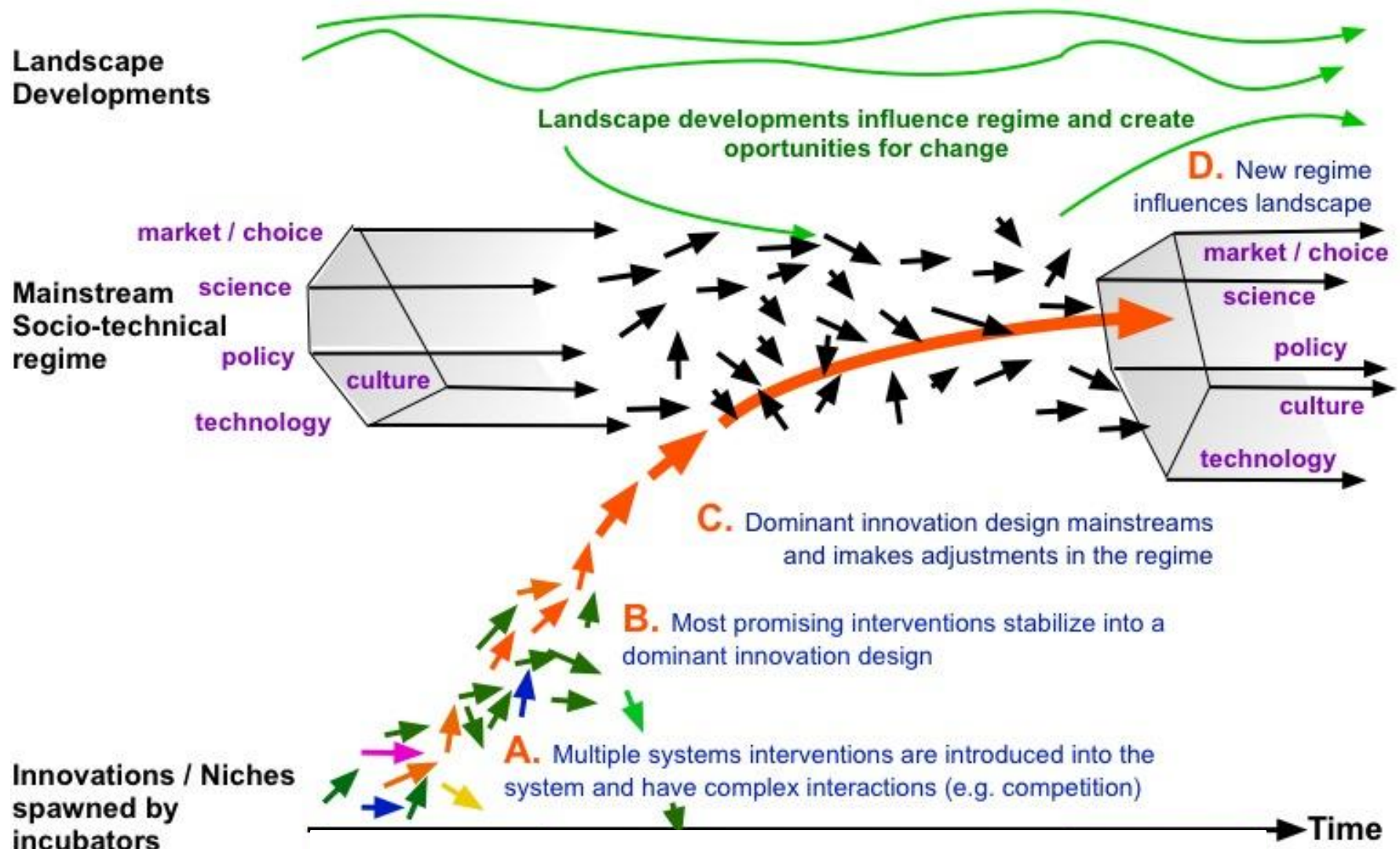
R4D Platforms for Research and Scaling Process

1. Baseline Situation Analysis → **entry points** for research
2. Systems interventions through R4D platforms and participatory research processes,
3. Pathways to adoptability and impacts,
4. Scaling:
 - Direct growth (links with extension; multiplication of sites, etc.)
 - Inward looking (build on existing initiatives – “bring them in”)
 - Outward looking (Link to partner development programs)
5. Produce Global Synthesis on key outcomes as International Global Products.

System innovation trajectories



Innovation and Change



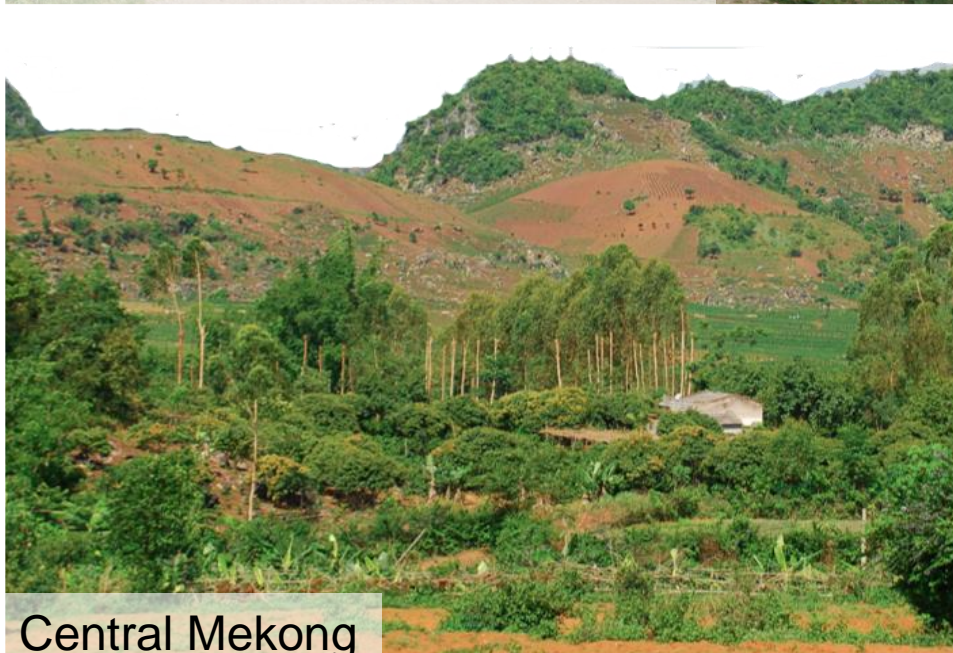
Flagship Projects



Central America and Caribbean



West African humid lowlands



Central Mekong



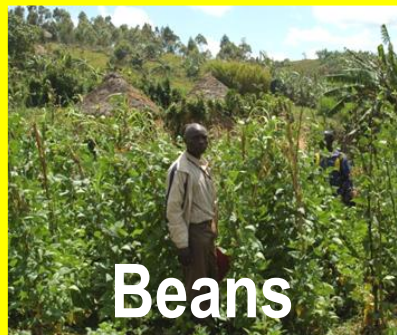
East and Central African humid highlands

A Flagship Project Example East and Central African Highlands

Food security and cash crops



Banana



Beans



Cassava



Maize

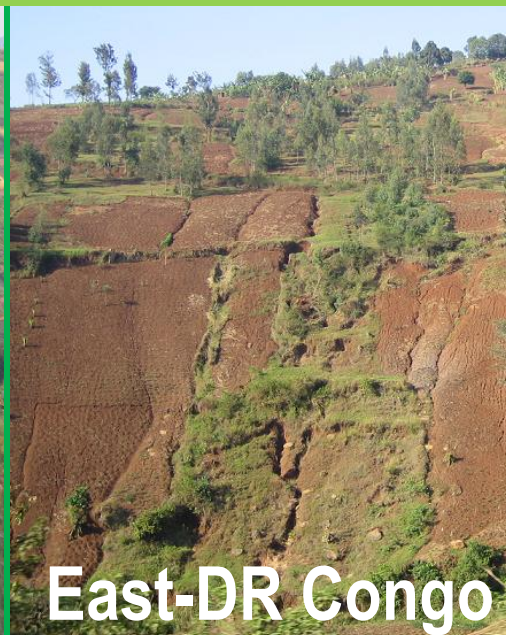


Coffee

Natural resource status



Rwanda

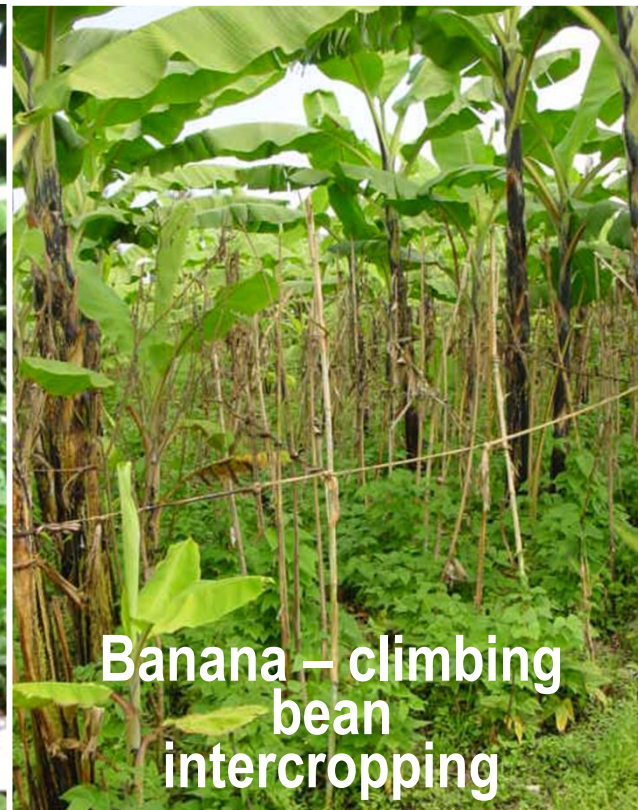


East-DR Congo

Livestock



Entry point: Niches for multi-purpose legumes



Socio-technical regime

Diversity – services, policy, markets, etc

Market functions



Service delivery



DR Congo



Kenya

Policy environment



Prov. Min. of Agric.,
Sud-Kivu, DR Congo



Website of MoA Rwanda
Coffee-banana system

Improved bananas Introduced to overcome pests and disease



•Attempts to control banana pathogens
== with limited success.

- Chemical control not sustainable
- mechanical control is laborious.



•➔ high yielding banana hybrids for resistance to diseases and pests, yield increase and sensory qualities.

Three key elements

- Developing healthy planting material
 - macro-propagation and false decapitation technologies for production of healthy planting material
- Partnership in technology evaluation and out-scaling
 - Research, development, policy makers, private sector, Development partners, Farmers
- Building capacity of extension workers and farmers - Training of trainers' workshops.

Existing partnerships



Partners: Farmer organizations, local and international NGOs, NARS, CGIAR, policy, private sector, donors, etc

Model: R4D platforms on specific themes

Themes: Banana/legume systems, sustainable intensification, market access, nutrition



Partners: Farmer organizations, local NGOs, NARS, CGIAR, policy, private sector, etc

Model: Innovation platforms on priority value chains

Themes: Various value chains (banana, beans, milk, potato..)



Partners: Farmer organizations, NARS, CGIAR, private sector, agro-dealers, etc

Model: Development platforms on specific themes

Themes: Soybean value chains, striga elimination, maize marketing

Entry points for system improvement



Action Area meeting, Bukavu, May 2013

Collaborations and partnerships

- CGIAR Centers
 - IITA, ICRAF, ILRI, CIAT, Bioversity, CIP, IWMI
- Non-CGIAR partners
 - AVRDC, Wageningen University, *icipe*, FARA
- Advanced Research Institutes
 - Cirad, CSIRO, SLU (**Innovation Labs???**)
- National research institutions
- Development organizations
- Farmer organizations

Funding from W1&2:
65% to CGIAR partners, 35% to non-CGIAR partners

West Africa Action Area Launching



Action Site Launching, Oshogbo



Conclusion

CGIAR and Innovation Labs

- Linkage with CGIAR Research Programs (CRPs)
 - High potential for scaling out and outcomes generation
 - Possible joint workshop: CRPs and Innovation Labs
- Linkage with Humidtropics:
 - Strategic Partnerships with relevant Innovation Labs
 - Co-engagement principle
 - R4D Platform engagement of Innovation Labs
 - Humidtropics engagement in Innv. Lab process

Thank You

