

Project Peanut Butter

Dr. Mark Manary

The presenter has no interests to declare



Burden of poor nutrition

- Inadequate dietary intake, reduces human survival, productivity and well-being wherever it occurs.
- The inadequate dietary intake is primarily the result of poverty.
- Lancet nutrition series last month reminds us that we are not making much progress to reduce the burden of poor nutrition.
- Dietary intake comes from agriculture

Severe and moderate malnutrition

- Primarily affects children from conception to 2 years of age.
- This age range is a critical time for growth and development, exerts lifelong effects.
- Is treatable, and with more effort, is preventable.
- It is a problem centered in rural Africa, and Africa is the most rural of continents.

Severe malnutrition





MUAC can be used as a screening tool and a way to identify malnourished children

Malawi Nutrition Clinic



Moms gathered for nutritional screening



Mother feeding child RUTF to insure child has an appetite before returning home



Mothers in line to receive RUTF for their children

Malawian health aids teaching mothers how to feed their children





Locally Produced Ready-To-Use Therapeutic Foods



Chiponde

- Individual sachet is 92 g
- 500 kcal per sachet
- Ingredients
 - Peanut Paste
 - Milk
 - Oil
 - Sugar
 - Vitamin Pre-Mix
- A child being treated for severe acute malnutrition will need 10–15 kg of RUTF, given over a period of six to eight weeks.



Local Production of RUTF



Packaging Machines



Sierra Leone

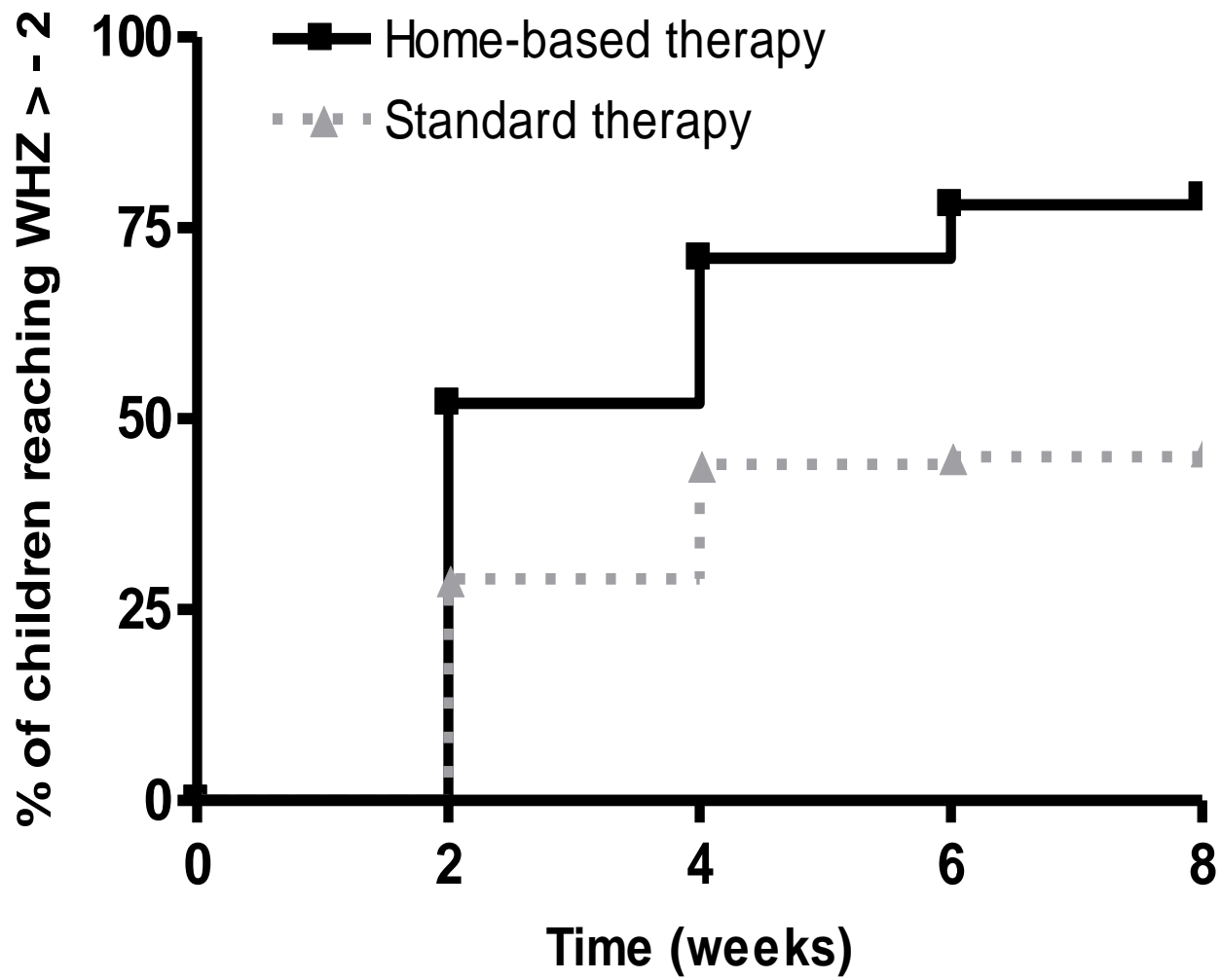
Malawi

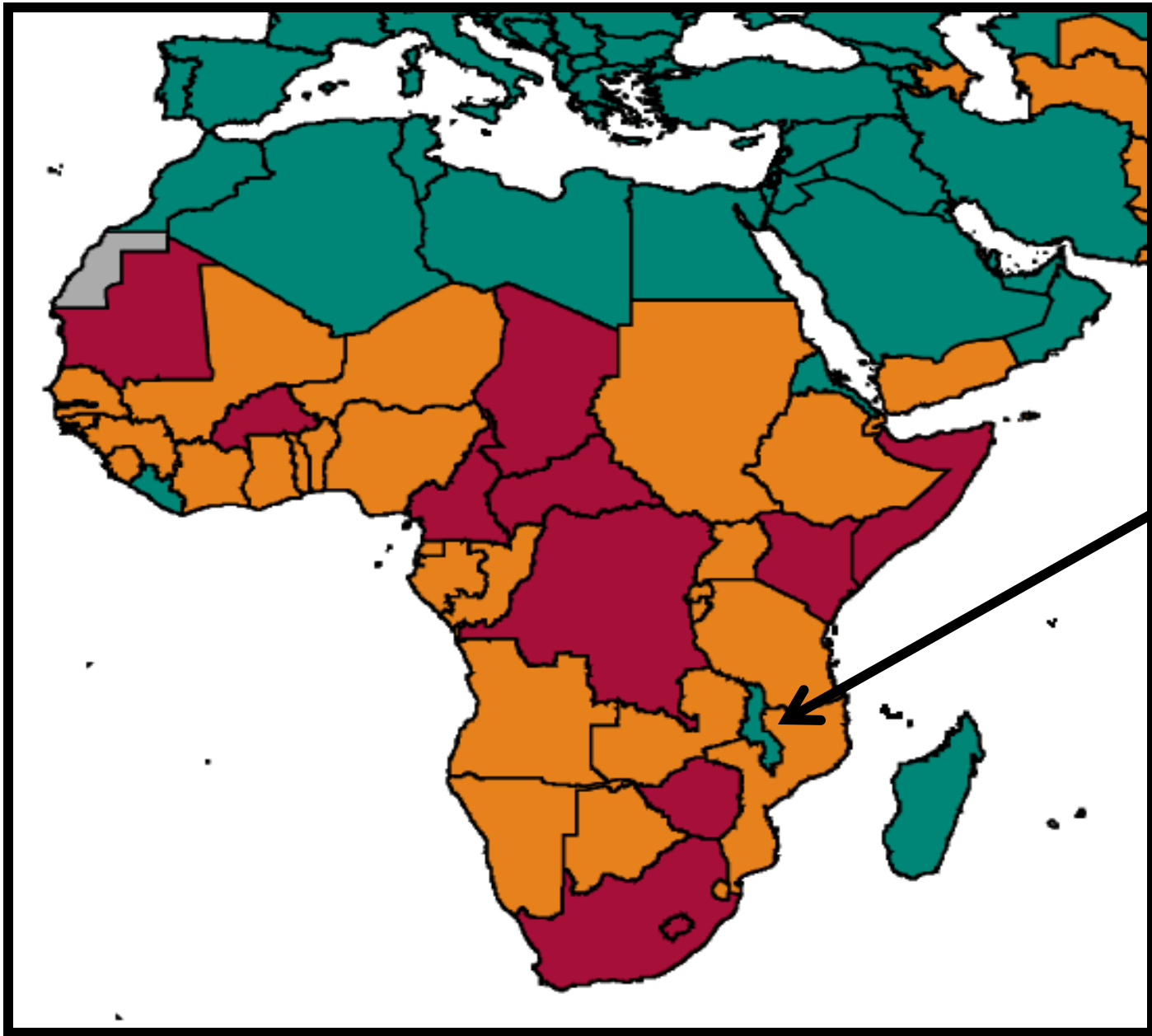


Production



**Weight Stations and Emulsifier Station
(Sierra Leone)**





Malawi

This required a high quality food

- Standard equal to that of infant formula in Europe
- < 0 coliforms/g
- Aflatoxin < 5 ppb
- Negative for serious human pathogens such as salmonella
- Strict composition requirements
- Shelf life of 2 years

Agricultural Inputs



Peanut sorting



Peanut Harvesting



Peanut Drying



